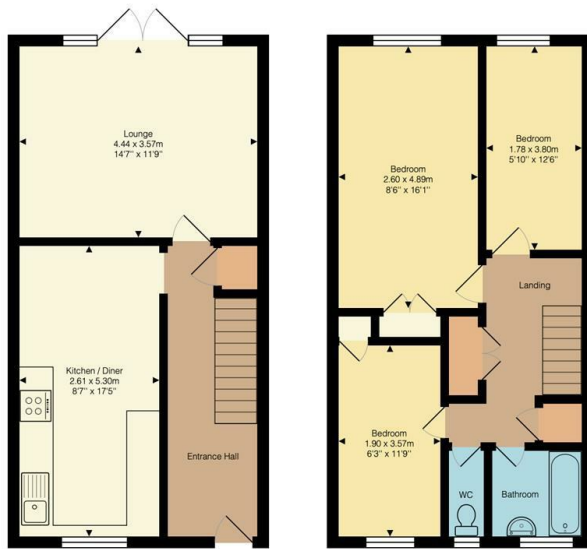




64 Wesley Road, Sandy, SG19 1RL

£240,000

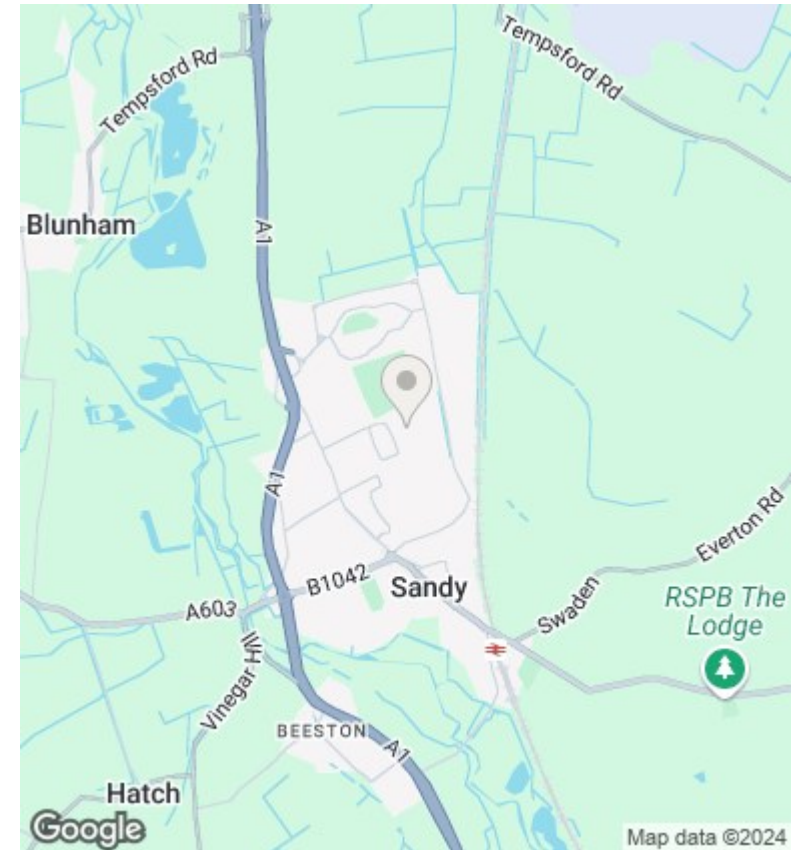
- CHAIN FREE
- Cul de sac location
- Three bedrooms
- Gas to radiator central heating system
- Garage
- Viewing is highly advised



Wesley Road, Sandy, SG19 1RL

Approximate Total Area: 82.3 m² ... 885 ft²

This plan is for illustrative purposes only. Measurements and positions of doors, windows, and fixtures are approximate and should not be relied upon.



Directions

Viewings

Viewings by arrangement only. Call 01767 691122 to make an appointment.

Council Tax Band

B

EPC Rating:

D

Energy Efficiency Rating		Current	Potential
<i>Very energy efficient - lower running costs</i>			
(92 plus) A			
(81-91) B			74
(69-80) C			
(55-68) D		55	
(39-54) E			
(21-38) F			
(1-20) G			
<i>Not energy efficient - higher running costs</i>			
England & Wales		EU Directive 2002/91/EC	