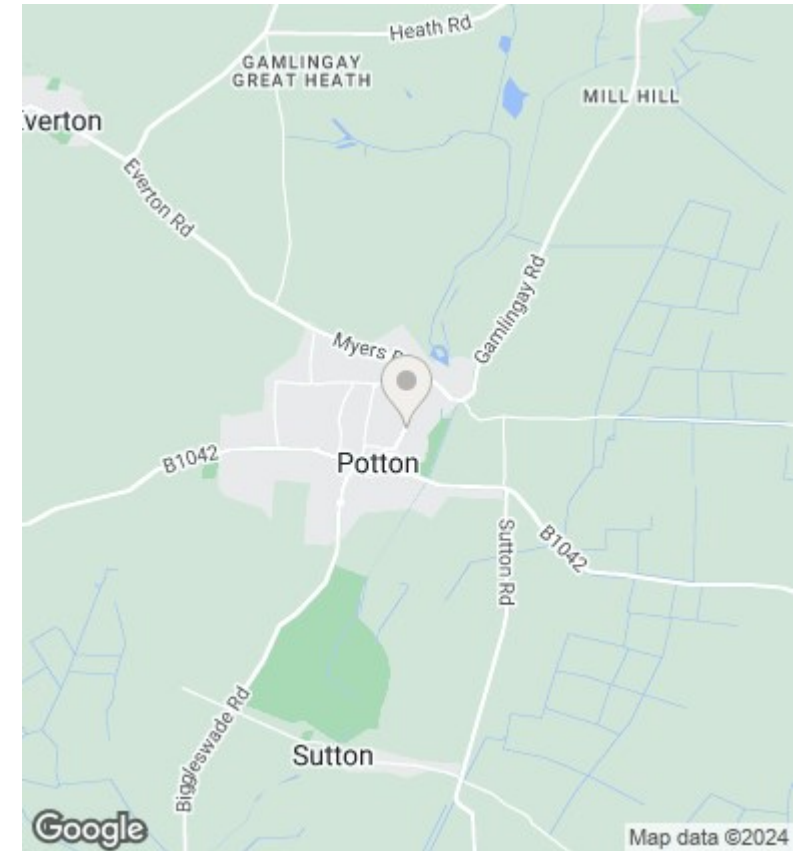
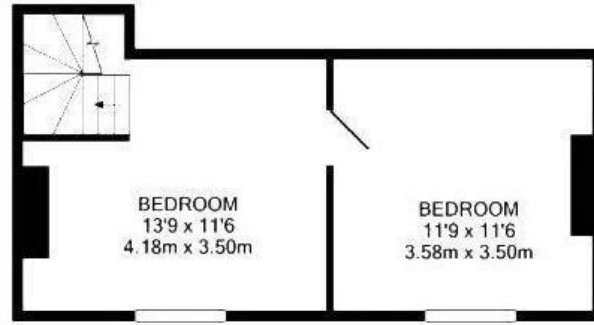
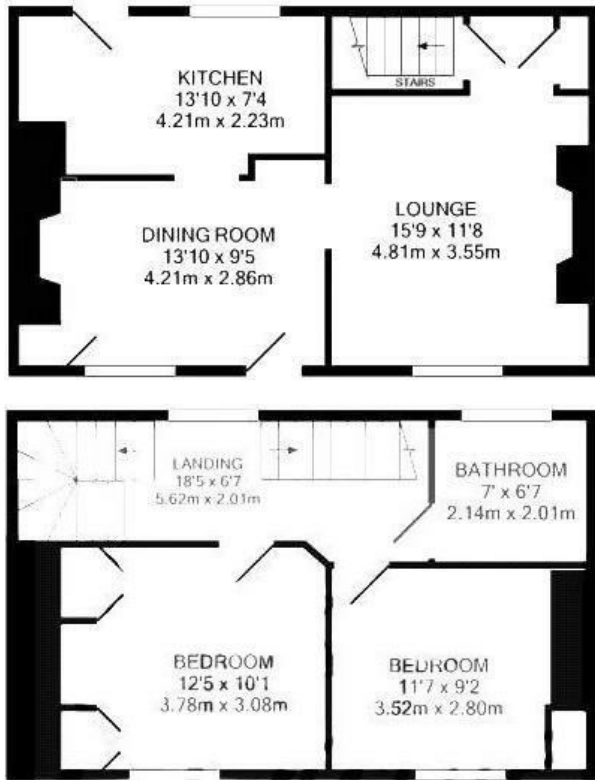




20 King Street, Potton, Sandy, SG19 2QT

Price Guide £295,000

- Grade II listed Victorian cottage
- Completed Chain above
- Private and fully enclosed rear garden
- Situated within a popular market town
- charming character features
- Open fireplace in lounge
- Secondary glazed windows
- Exposed beams
- Four double bedrooms
- Immediate access to town centre and amenities



Directions

Viewings

Viewings by arrangement only. Call 01767 691122 to make an appointment.

Council Tax Band

C

EPC Rating: