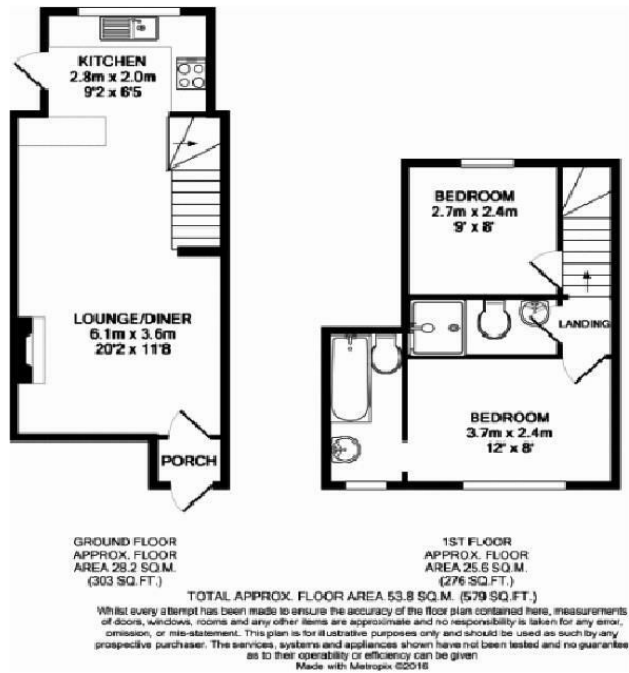




37 Laburnum Road, Sandy, Bedfordshire, SG19 1HG

Asking Price £275,000

- Charming red brick cottage
- Close proximity of the Town centre and train station
- Refitted Kitchen & Combi Boiler
- Viewing Highly Recommended
- Two Bedrooms
- En suite to Master with mains fed shower
- Breakfast bar and Integrated dishwasher
- Open plan living
- Well Presented
- Excellent first time buy



Directions

Viewings

Viewings by arrangement only. Call 01767 691122 to make an appointment.

Council Tax Band

A

EPC Rating:

D

Energy Efficiency Rating		Current	Potential
<i>Very energy efficient - lower running costs</i>			
(92 plus) A			90
(81-91) B			
(69-80) C			
(55-68) D		66	
(39-54) E			
(21-38) F			
(1-20) G			
<i>Not energy efficient - higher running costs</i>			
England & Wales		EU Directive 2002/91/EC	