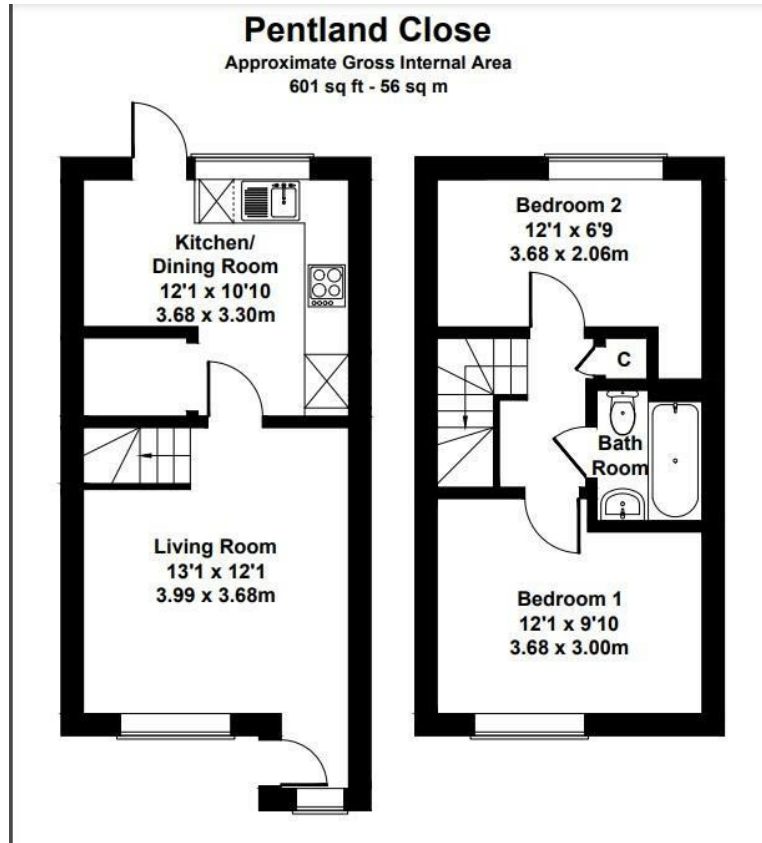




14 Pentland Close, Sandy, SG19 1TP

Asking Price £240,000

- Chain Free
- Close to the town centre
- Two bedrooms
- Well Presented
- Two parking spaces
- Quiet cul-de-sac location.
- Gas central heating
- Rear garden



Directions

Viewings

Viewings by arrangement only. Call 01767 691122 to make an appointment.

Council Tax Band

B

EPC Rating:

C

Energy Efficiency Rating		Current	Potential
<i>Very energy efficient - lower running costs</i>			
(92 plus)	A		89
(81-91)	B		
(69-80)	C	71	
(55-68)	D		
(39-54)	E		
(21-38)	F		
(1-20)	G		
<i>Not energy efficient - higher running costs</i>			
England & Wales		EU Directive 2002/91/EC	