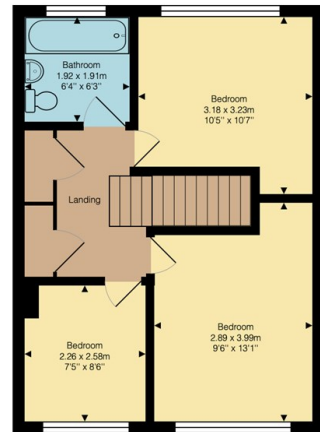
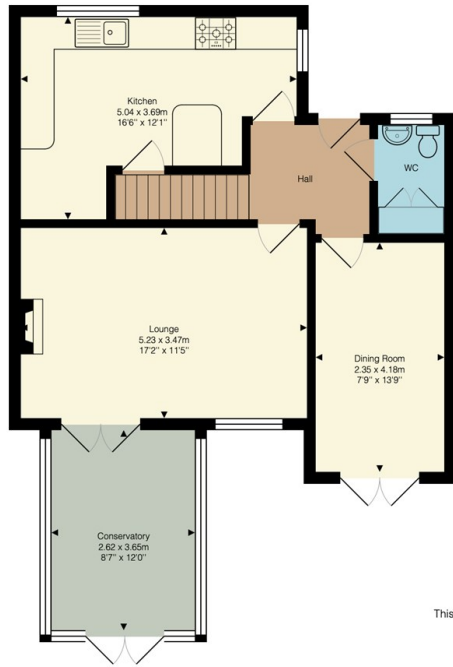




25 Baker Avenue, Potton, Sandy, SG19 2PJ

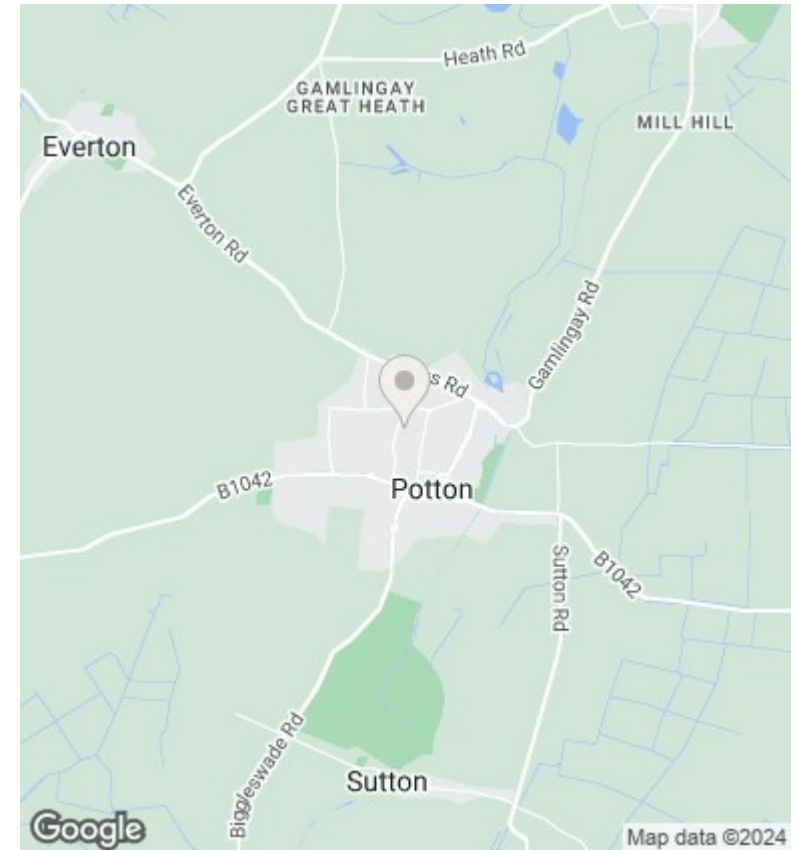
Asking Price £385,000

- Three bedrooms
- Integrated appliances
- Cul de sac location
- Viewing Highly recommended
- Popular Location
- Well Presented
- Conservatory
- Off Road Parking for upto four cars
- Semi detached
- WC



Baker Avenue, Potton, SG19 2PJ
 Approximate Total Area: 102.6 m² ... 1104 ft²

This plan is for illustrative purposes only. Measurements and positions of doors, windows, and fixtures are approximate and should not be relied upon.



Directions

Viewings

Viewings by arrangement only. Call 01767 691122 to make an appointment.

Council Tax Band

EPC Rating:

C

Energy Efficiency Rating		Current	Potential
Very energy efficient - lower running costs			
(92 plus) A			
(81-91) B			
(69-80) C		74	84
(55-68) D			
(39-54) E			
(21-38) F			
(1-20) G			
Not energy efficient - higher running costs			
England & Wales		EU Directive 2002/91/EC	