

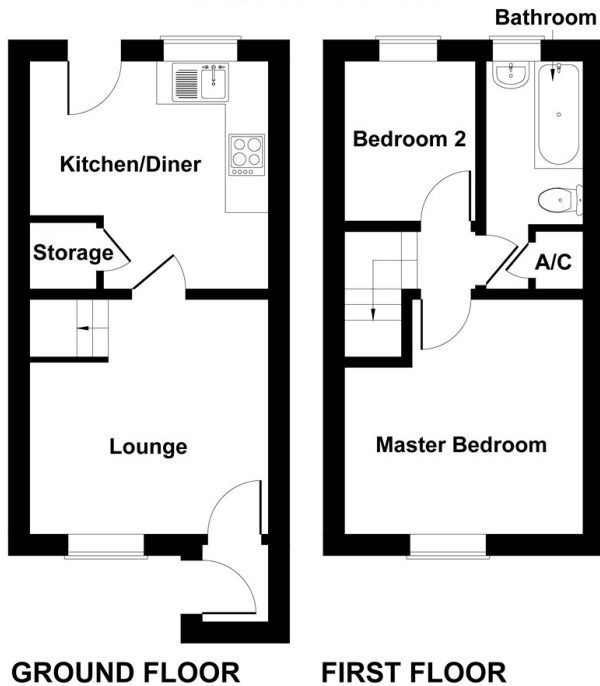


## 46 Astral Close, Lower Stondon, Henlow, SG16 6EL

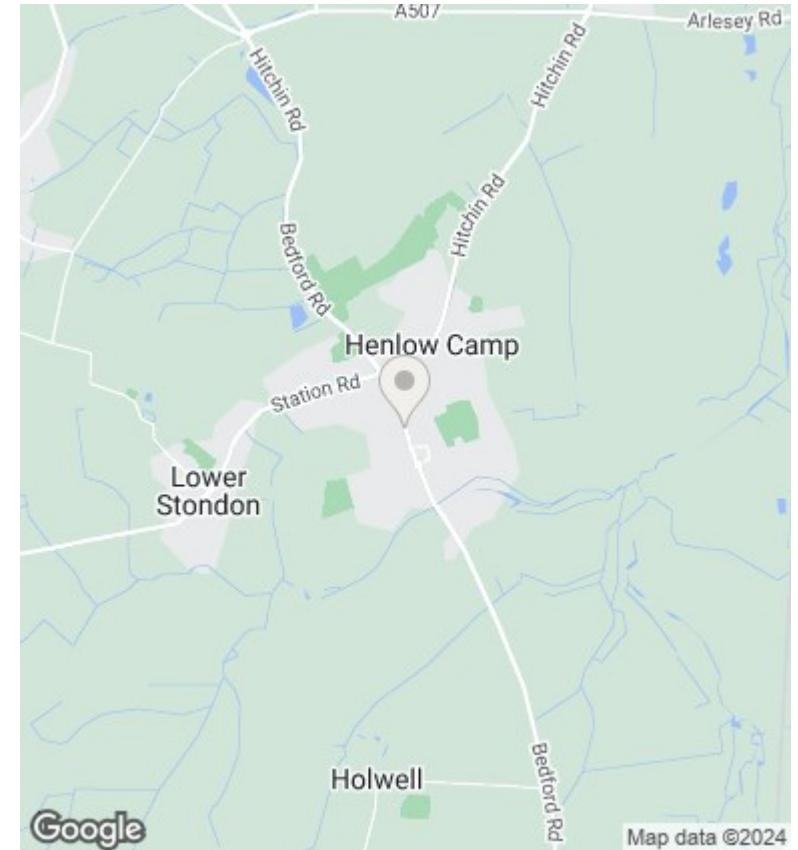
Guide Price £265,000

- Two Bedrooms
- Quiet location
- Enclosed rear garden
- Viewing highly advised
- Popular location
- Well Presented
- Excellent First time buy
- Finished to high specification
- Excellent links to A1
- Refitted kitchen

## Astral Close



Not to Scale. Produced by The Plan Portal 2022  
For Illustrative Purposes Only.



### Directions

### Viewings

Viewings by arrangement only. Call 01767 691122 to make an appointment.

### Council Tax Band

### EPC Rating:

D

Energy Efficiency Rating		Current	Potential
<i>Very energy efficient - lower running costs</i>			
(92 plus)	A		89
(81-91)	B		
(69-80)	C	67	
(55-68)	D		
(39-54)	E		
(21-38)	F		
(1-20)	G		
<i>Not energy efficient - higher running costs</i>			
<b>England &amp; Wales</b>		EU Directive 2002/91/EC	