

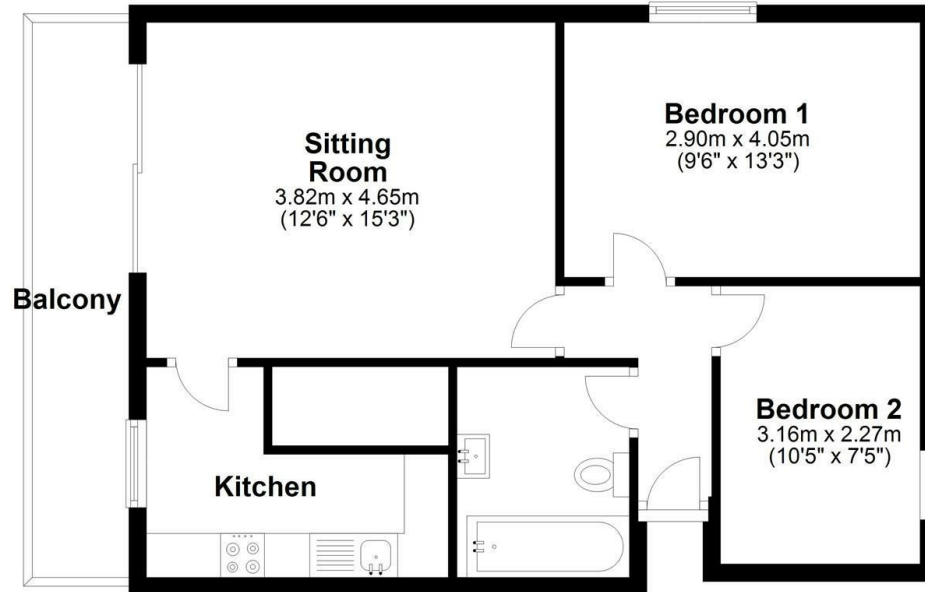


4 Swansholme Court, Sandy, SG19 1EG

Asking Price £180,000

- No Chain
- Quiet location
- Garage en bloc
- Communal Gardens
- Rare to the market
- kitchen
- Small Block
- two bedrooms
- Long lease
- Close to town

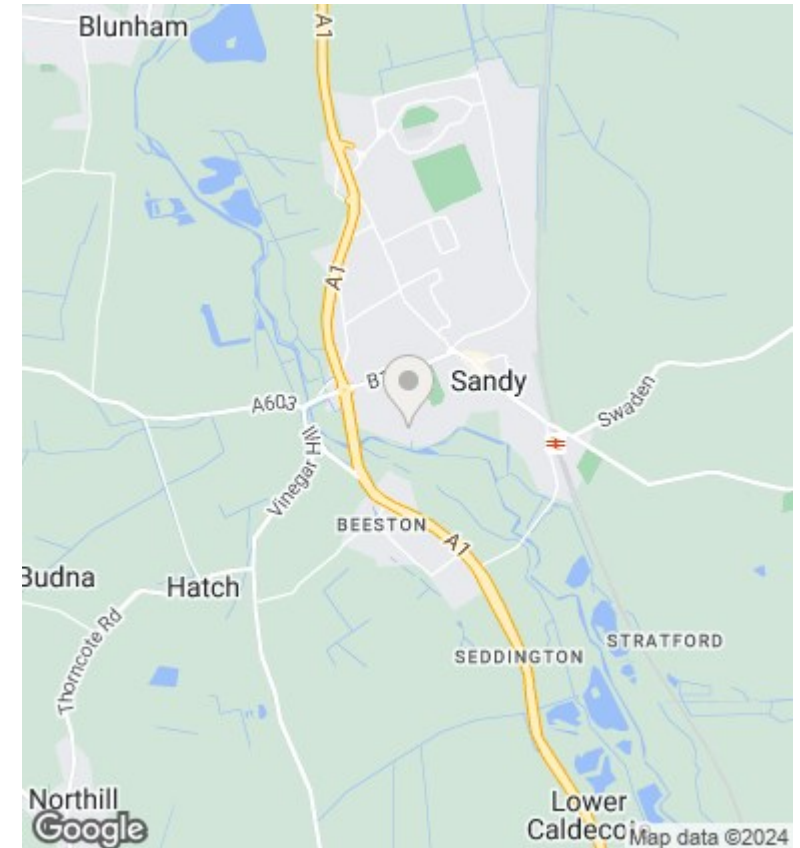
First Floor



Total area: approx. 54.3 sq. metres (584.3 sq. feet)

This floor plan is for illustrative purposes only. The total size does not include outbuildings and is an approximate.

Plan produced using PlanUp.



Directions

Viewings

Viewings by arrangement only. Call 01767 691122 to make an appointment.

Council Tax Band

B

EPC Rating:

D

Energy Efficiency Rating		
	Current	Potential
<i>Very energy efficient - lower running costs</i>		
(92 plus) A		
(81-91) B		77
(69-80) C		
(55-68) D	61	
(39-54) E		
(21-38) F		
(1-20) G		
<i>Not energy efficient - higher running costs</i>		
England & Wales	EU Directive 2002/91/EC	