



Carter Street
Sandy, SG19 1BT

Asking Price Of
£250,000

Property Features

- CHAIN FREE
- Gas central heating
- Close proximity to the town centre and transport links
- Ideal for first time buyers and commuters
- Two double bedrooms

Full Description

****CHAIN FREE**** Lane & Browns presents this two bedroom Middle terrace home, Ideal for **FIRST TIME BUYERS**. The property comprises of two double bedrooms, lounge, kitchen/diner and bathroom, with gas central heating and a large enclosed rear garden. Situated conveniently close to the town centre; providing easy access to the A1, Sandy railway line, and the towns local amenities. Viewing is advised.

LOUNGE

10' 93" x 9' 88" (5.41m x 4.98m)

HALLWAY

Staircase leading to first floor accommodation.

BATHROOM

KITCHEN/DINER

13' 61" x 9' 73" (5.51m x 4.6m)

STAIRS AND LANDING

MASTER BEDROOM

9' 88" x 10' 92" (4.98m x 5.38m)

BEDROOM 2

9' 82" x 8' 89" (4.83m x 4.7m)

REAR GARDEN

Fully enclosed by timber fence, laid mainly to lawn with divided patio area, timber shed and shrub borders.



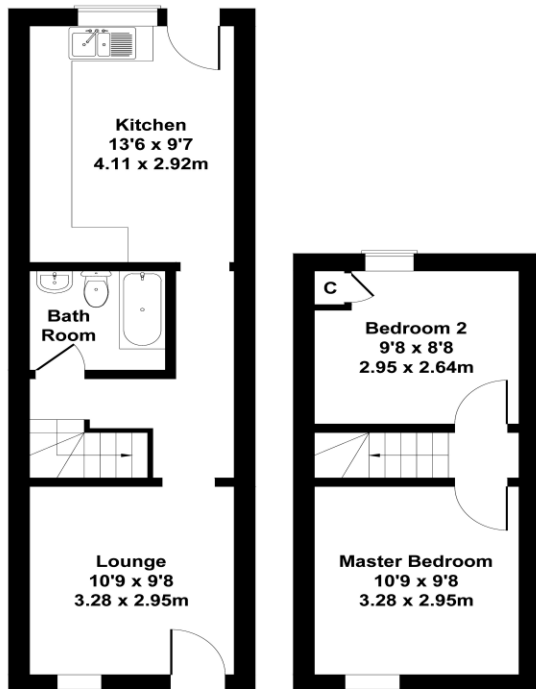


Score	Energy rating	Current	Potential
92+	A		
81-91	B		91 B
69-80	C	75 C	
55-68	D		
39-54	E		
21-38	F		
1-20	G		



Carter Street

Approximate Gross Internal Area
582 sq ft - 54 sq m



GROUND FLOOR

FIRST FLOOR

Not to Scale. Produced by The Plan Portal 2022
For Illustrative Purposes Only.



11 High Street
Sandy
Bedfordshire
SG19 1AG

www.lane-browns.co.uk
sales@lane-browns.co.uk
01767 691122

Agents Note: Whilst every care has been taken to prepare these sales particulars, they are for guidance purposes only. All measurements are approximate and are for general guidance purposes only and whilst every care has been taken to ensure their accuracy, they should not be relied upon and potential buyers are advised to recheck the measurements