



Cauldwell Court

Sandy, SG19 1DA

Guide Price £270,000-£280,000

Property Features

- Extended
- Four bedrooms
- WC
- Refitted kitchen
- Lounge
- En- Suite to master
- Excellent family space
- Well presented
- Generous sized Accommodation
- Viewing highly recommended

Full Description

GUIDE PRICE £270,000-£280,000 This extended four bedroom family house boast a 25ft x 13ft family room, with accommodation over three levels, this four bedroom property must be viewed to appreciate the space on offer. The property comprises; entrance hall, cloakroom, re-fitted kitchen, lounge/dining room, further family room to first floor, bedroom & en-suite on first floor, further three bedrooms to second floor and family bathroom and rear garden. this property offers everything the growing family requires and viewing is highly advised to fully appreciate the fantastic living space,

ENTRANCE HALL

WC

DINING ROOM/ FAMILY ROOM
25' 8" x 13' 7" (7.82m x 4.14m)

LOUNGE
15' 0" x 14' 8" (4.57m x 4.47m)

1ST FLOOR

MASTER BEDROOM
11' 6" x 9' 7" (3.51m x 2.92m)

EN-SUITE

BEDROOM
11' 7" x 8' 4" (3.53m x 2.54m)

SECOND FLOOR

BEDROOM



9' 8" x 8' 5" (2.95m x 2.57m)

BEDROOM

9' 0" x 6' 1" (2.74m x 1.85m)

FAMILY BATHROOM

EXTERNALLY

REAR GARDEN

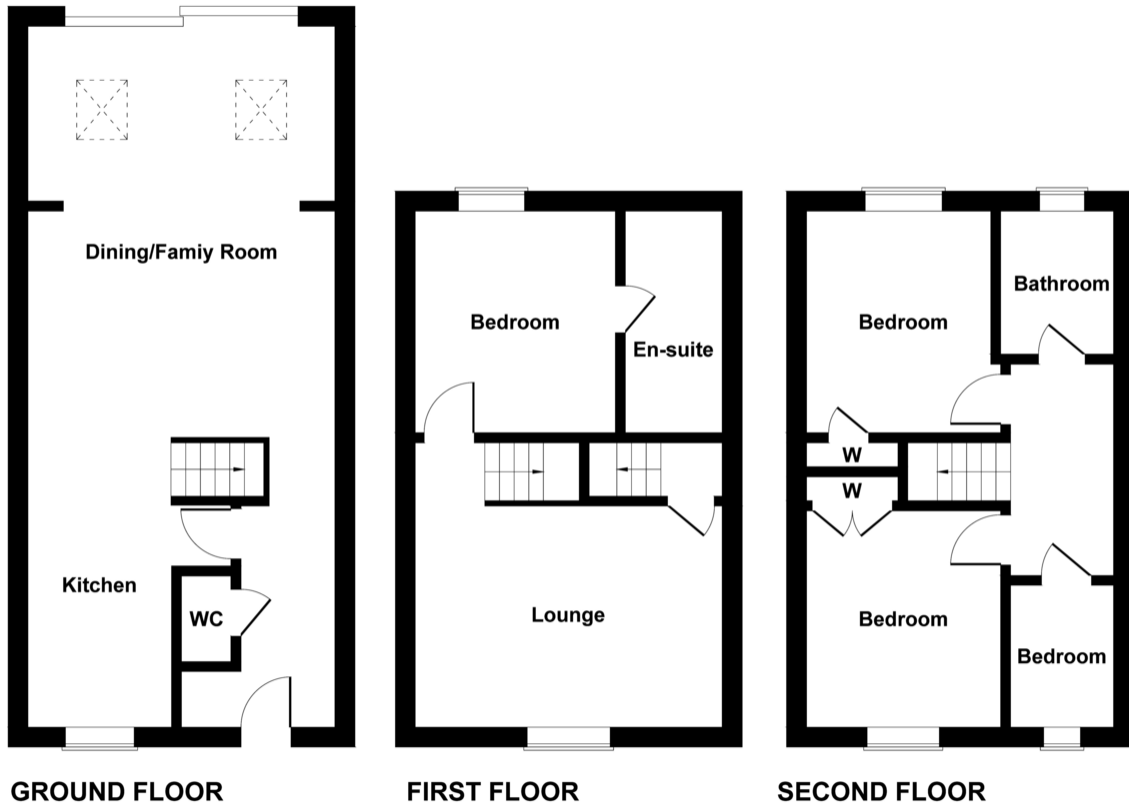
Enclosed by timber fence, with gated rear access, decking area and astro turf

FRONT GARDEN

enclosed by brick wall, shingled area and pathway leading to front door



Cauldwell Court



Not to Scale. Produced by The Plan Portal 2021
For Illustrative Purposes Only.

%epcGraph_c_1_339%

11 High Street
Sandy
Bedfordshire
SG19 1AG

www.lane-browns.co.uk
sales@lane-browns.co.uk
01767 691122

Agents Note: Whilst every care has been taken to prepare these sales particulars, they are for guidance purposes only. All measurements are approximate and are for general guidance purposes only and whilst every care has been taken to ensure their accuracy, they should not be relied upon and potential buyers are advised to recheck the measurements