



Thorncote Green

Hatch, Sandy, SG19 1PU

£369,995

Property Features

- Semi detached
- Three bedrooms
- Viewing Highly Recommended
- Quite location
- Well Presented
- Rear garden approx 195ft
- Driveway for up to five cars
- Rare to market
- Pleasant plot
- Views backing onto open fields

Full Description

****Rare To The Market****, Situated in the popular Bedfordshire Hamlet of Hatch, This well presented three bedroom semi detached family home is well presented, Offered to the market with ample off road parking and good living accommodation the property comprises of Lounge, kitchen/Diner, upstairs offers three bedrooms and a refitted family bathroom. Externally there is a generous sized rear measuring approx 195ft in length with large workshop space and a driveway providing off road parking for upto five cars This will make a great family home Close to open countryside and views to the rear of the property over open farm land. Viewing is highly recommended.

ENTRANCE HALL

LOUNGE

17' 1" x 10' 7" (5.21m x 3.23m)

KITCHEN/DINER

10' 5" x 17' 1" (3.18m x 5.21m)

FIRST FLOOR LANDING

MASTER BEDROOM

13' 7" x 10' 9" (4.14m x 3.28m)

BEDROOM

13' 5" x 7' 8" x 2.34m)

BEDROOM

13' 6" x 7' 9" (4.11m x 2.36m)

FAMILY BATHROOM

EXTERNALLY



REAR GARDEN

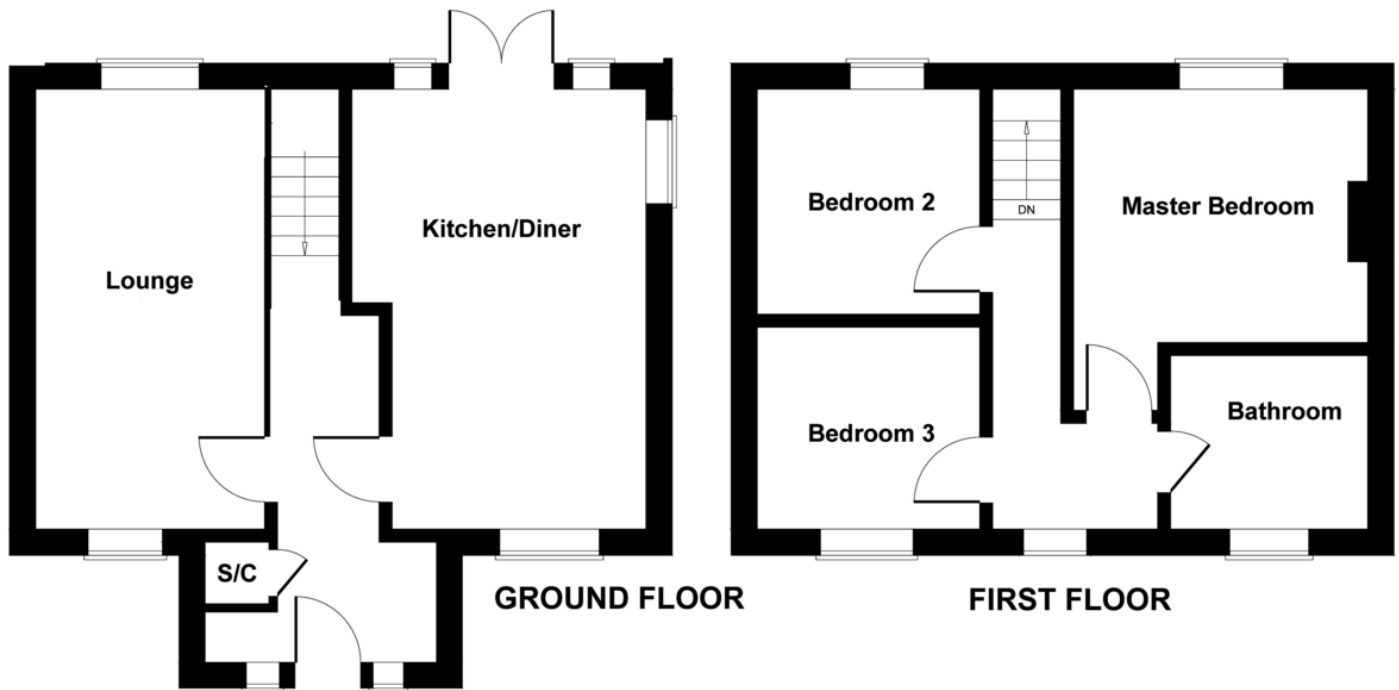
Enclosed by timber fence, large workshop space with power and light, gated side access approx 195ft in length backing onto open fields at the rear of the property

DRIVEWAY

Driveway to front with shingled drive and laid to lawn potentially providing parking for upto three cars potentially more



Thorncote Green Hatch



Not to Scale. Produced by The Plan Portal 2021

%epcGraph_c_1_339%

11 High Street
Sandy
Bedfordshire
SG19 1AG

www.lane-browns.co.uk
mail@lane-browns.co.uk
01767 691122

Agents Note: Whilst every care has been taken to prepare these sales particulars, they are for guidance purposes only. All measurements are approximate and are for general guidance purposes only and whilst every care has been taken to ensure their accuracy, they should not be relied upon and potential buyers are advised to recheck the measurements