



London Road

Sandy, SG19 1DN

Guide Price

£300,000

Property Features

- Detached
- Wrap around Plot
- Garage and driveway
- Three bedrooms
- Dining Room
- Viewing highly recommended
- Popular location
- Front & Rear Gardens
- Generous sized accommodation

Full Description

ENTRANCE HALL

KITCHEN

12' 0" x 6' 7" (3.66m x 2.01m)

HALLWAY

Access to Loft and airing cupboard

WC

LOUNGE

15' 7" x 11' 9" (4.75m x 3.58m)

DINING ROOM

15' 8" x 8' 8" (4.78m x 2.64m)

SHOWER ROOM

MASTER BEDROOM

11' 6" x 9' 3" (3.51m x 2.82m)

BEDROOM 2

10' 4" x 8' 1" (3.15m x 2.46m)

BEDROOM 3

11' 0" x 7' 5" (3.35m x 2.26m)

EXTERNALLY

FRONT GARDEN

Enclosed, mature shrubs gated access mainly laid to lawn

REAR GARDEN

Enclosed by timber fence mainly laid to lawn with patio area, gated side access leading to driveway and garage



GARAGE

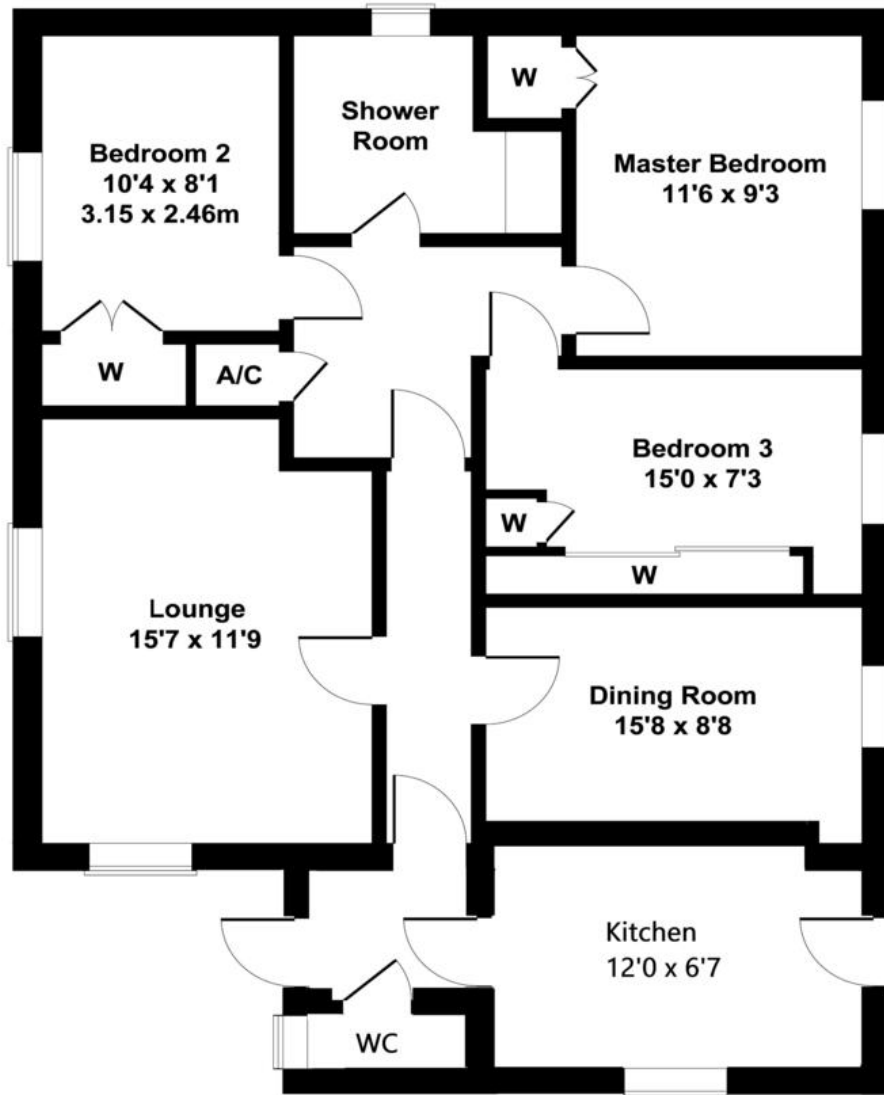
Electric roller door with side access into garden

DRIVEWAY

Providing off road parking for one car.



London Road



11 High Street
Sandy
Bedfordshire
SG19 1AG

www.lane-browns.co.uk
james@lane-browns.co.uk
01767 691122

Agents Note: Whilst every care has been taken to prepare these sales particulars, they are for guidance purposes only. All measurements are approximate and are for general guidance purposes only and whilst every care has been taken to ensure their accuracy, they should not be relied upon and potential buyers are advised to recheck the measurements.