



Station Road

Langford, Biggleswade SG18 9PQ

Guide Price

£340,000

Property Features

- CHAIN FREE
- Sort after village location
- Off Road Parking to the front
- Large Rear Garden
- WC
- Well presented
- Dining room
- Patio area
- Viewing Highly recommended

Full Description

CHAIN FREE This well presented three bedroom mid terraced property, situated in a popular village location, offered to the market with ample off road parking and good living accommodation and generous sized rear garden. Viewing is highly recommended. This will make a great family home. Close to open countryside with the commuter benefits of the A1 motorway and nearby train stations at Biggleswade and Arlesey.

ENTRANCE HALL

LOUNGE

16'8 x 10'7 (5.08 x 3.23)

DINING ROOM

10' 4" x 9' 0" (3.15m x 2.74m)

WC

KITCHEN

10' 6" x 7' 4" (3.2m x 2.24m)

STAIRS AND LANDING

MASTER BEDROOM

12' 7" x 9' 0" (3.84m x 2.74m)

BEDROOM 2

10' 9" x 9' 3" (3.28m x 2.82m)

BEDROOM 3

7' 7" x 7' 1" (2.31m x 2.16m)

FAMILY BATHROOM



EXTERNALLY

REAR GARDEN

Generous sized plot enclosed by timber fence, with gated side access and patio area and mainly laid to lawn

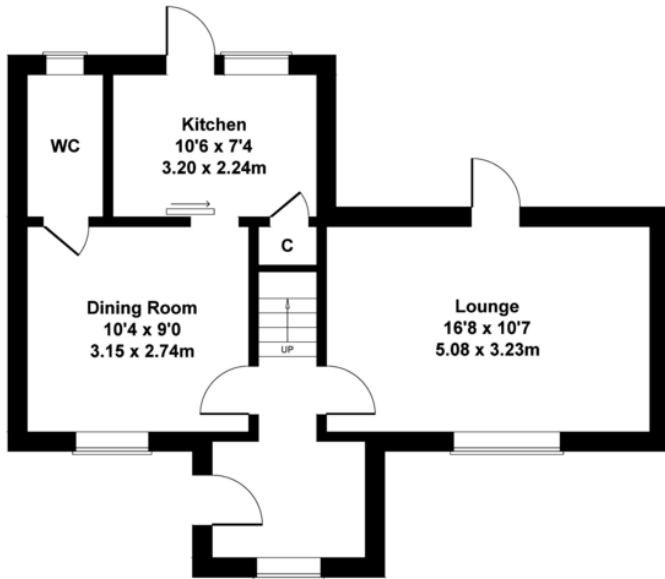
FRONT GARDEN & DRIVEWAY

Enclosed by brick wall, with shingle drive providing parking for up to 4 cars

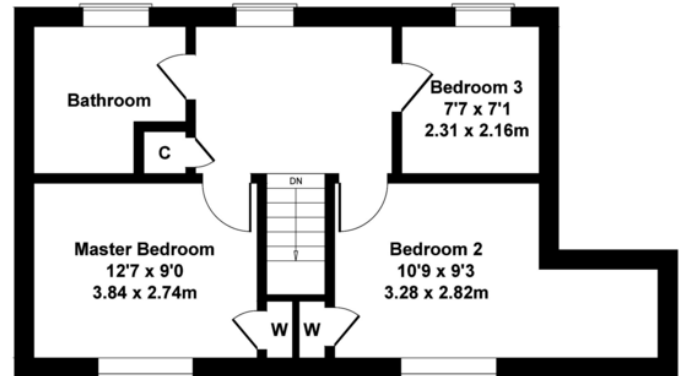


Station Road Langford

Approximate Gross Internal Area
980 sq ft - 91 sq m



GROUND FLOOR



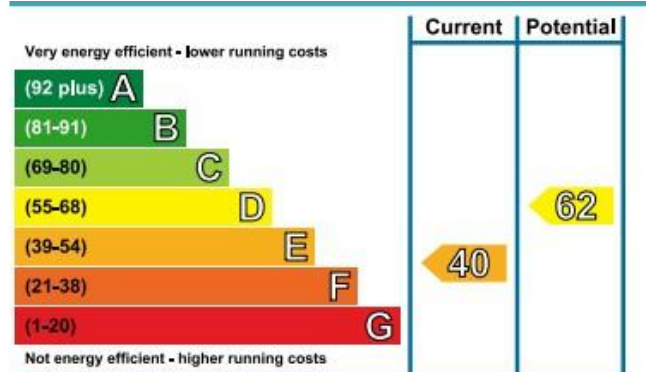
FIRST FLOOR

SKETCH PLAN FOR ILLUSTRATIVE PURPOSES ONLY

All measurements walls, doors, windows, fittings and appliances, their sizes and locations, are approximate only. They cannot be regarded as being a representation by the seller, nor their agent.

Produced by Potterplans Ltd. 2020

%epcGraph_c_1_339%



11 High Street
Sandy
Bedfordshire
SG19 1AG

www.lane-browns.co.uk
james@lane-browns.co.uk
01767 691122

Agents Note: Whilst every care has been taken to prepare these sales particulars, they are for guidance purposes only. All measurements are approximate are for general guidance purposes only and whilst every care has been taken to ensure their accuracy, they should not be relied upon and potential buyers are advised to recheck the measurements