



17 St. Johns Road

Moggerhanger, Bedford, MK44 3RJ

Asking Price of

£344,995

Property Features

- ** NO UPWARD CHAIN**
- Ample parking
- Garage and driveway
- Backing onto open paddock
- Three bedrooms
- Semi detached
- Potential to Improve
- Pleasant Plot
- Refurbishment required

Full Description

**** NO UPWARD CHAIN**** Situated in a popular village location this semi-detached three bedroom chalet style home backing on to paddocks Subject to planning permission the property offers fantastic potential to extend and further expand the internal accommodation. To the front of the home is a generous front garden and driveway leading to a detached single garage. As you enter the home you are greeted by a welcoming entrance hall with stairs to the first floor and a door leading to the lounge which features an open fireplace. viewing is highly recommended

ENTRANCE HALL

LOUNGE

14' x 12' 1" (4.27m x 3.68m)

DINING ROOM

10' 10" x 8' 11" (3.3m x 2.72m)

KITCHEN

10' 11" x 9' 5" (3.33m x 2.87m)

CONSERVATORY

15' 6" x 8' 0" (4.72m x 2.44m)

LANDING

MASTER BEDROOM

13' 9" x 11' 6" (4.19m x 3.51m)

BEDROOM

11' 4" x 10' 8" (3.45m x 3.25m)

BEDROOM

10' 7" x 7' 0" (3.23m x 2.13m)



BATHROOM

EXTERNALLY

FRONT GARDEN

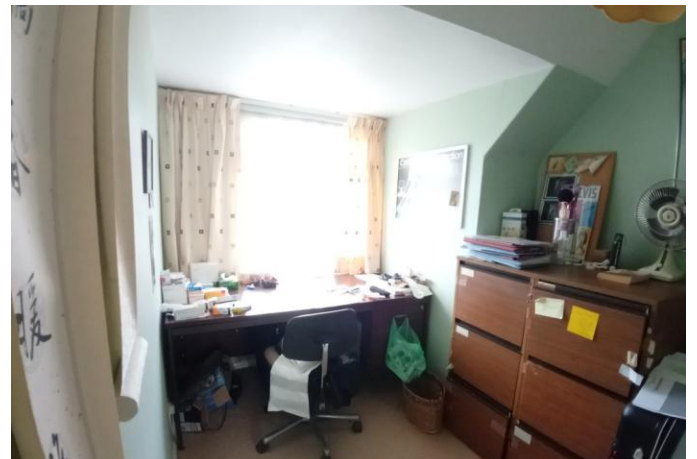
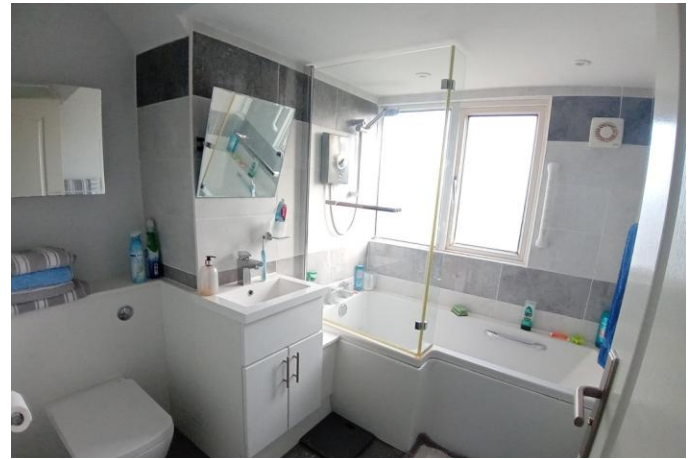
Mainly laid to lawn Block paved driveway providing ample parking for three cars leading up to single garage

GARAGE

Up and over door. Power and light. Personal side doo

REAR GARDEN

Enclosed by timber fence Garden mainly laid to lawn with patio area





11 High Street
Sandy
Bedfordshire
SG19 1AG

www.lane-browns.co.uk
james@lane-browns.co.uk
01767 691122

Agents Note: Whilst every care has been taken to prepare these sales particulars, they are for guidance purposes only. All measurements are approximate and are for general guidance purposes only and whilst every care has been taken to ensure their accuracy, they should not be relied upon and potential buyers are advised to recheck the measurements