



Bunyan Road

, Biggleswade, , SG18 8QQ

Asking Price Of £220,000

Property Features

- Town Centre location
- Exceptional Condition
- Allocated parking
- Close to train station
- Front Garden
- Refitted Kitchen
- Two bedrooms
- Opportunity for first time buyers
- Double glazing
- Patio doors leading to garden

Full Description

Exceptional condition, this well presented two bedroom home has been offered to the market in show home condition, situated in the heart of the popular market town of Biggleswade, Within close proximity of the Town Centre and Train station. To the ground floor you will find an entrance hall with spacious under stairs storage and cupboard housing the boiler. The property further benefits with refitted kitchen and spacious living/dining room with Patio doors leading to front garden allowing in plenty of natural light. Upstairs you will find two double bedrooms and the modern family bathroom which has also been refitted.

PORCH

ENTRANCE HALL

LOUNGE

15' 0" x 12' 0" (4.57m x 3.66m) into the bay

KITCHEN

11.' 8" x 6' 3" (3.56m x 1.91m)

LANDING

MASTER BEDROOM

11' 5" x 14' 8" (3.48m x 4.47m)

BEDROOM

12' 4" x 6' 6" (3.76m x 1.98m)

BATHROOM

EXTERNALLY

FRONT GARDEN



Enclosed by railing with gated access to pathway, patio area and lawn with outside secure storage area housing meters

PARKING

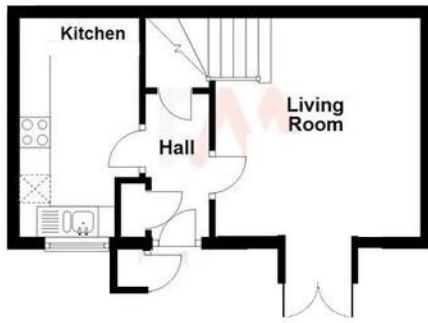
Allocated parking directly in front of property and further visitor parking



Energy Efficiency Rating		Environmental Impact (CO ₂) Rating	
	Current	Potential	
Very energy efficient - lower running costs 92 plus) A			
(81-91) B			
(69-80) C			
(55-68) D	68	76	
(39-54) E			
(21-38) F			63
(1-20) G			72
Not energy efficient - higher running costs			
England & Wales	EU Directive 2002/91/EC		England & Wales
	EU Directive 2002/91/EC		



Ground Floor



First Floor



11 High Street
Sandy
Bedfordshire
SG19 1AG

www.lane-browns.co.uk
claire@lane-browns.co.uk
01767 691122

Agents Note: Whilst every care has been taken to prepare these sales particulars, they are for guidance purposes only. All measurements are approximate and are for general guidance purposes only and whilst every care has been taken to ensure their accuracy, they should not be relied upon and potential buyers are advised to recheck the measurements.