



Owlswood

Sandy, SG19 2SL

Asking Price Of
£325,000

Property Features

- CHAIN FREE
- Popular Location
- Garage and driveway
- Ensuite to Master
- Office Space
- Enclosed rear Gardens
- kitchen /Diner
- Lounge
- Cul de sac location

Full Description

****CHAIN FREE**** Situated within the ever popular St Ivel Park development on the outskirts of the town, this well proportioned four bedroom townhouse offers flexible accommodation across three floors and benefits from an open plan kitchen/ diner (with French doors opening out to the rear garden), a separate ground floor reception room, a first floor lounge and a master bedroom with en suite shower room. Outside, there is an enclosed rear garden and a single garage.

ENTRANCE HALL

OFFICE PLAY ROOM

9' 8" x 9' 3" (2.95m x 2.82m)

WC

KITCHEN/BREAKFAST ROOM

14' 8" x 12' 9" (4.47m x 3.89m)

1ST FLOOR

LOUNGE

14' 8" x 12' 2" (4.47m x 3.71m)

MASTER BEDROOM

9' 7" x 9' 4" (2.92m x 2.84m)

ENSUITE

SECOND FLOOR

BEDROOM

12' 5" x 8' (3.78m x 2.44m)



BEDROOM

10' 6" x 7' 9" (3.2m x 2.36m)

BEDROOM

9' 3" x 6' 6" (2.82m x 1.98m)

BATHROOM

EXTERNALLY

DRIVEWAY

Parking for two cars

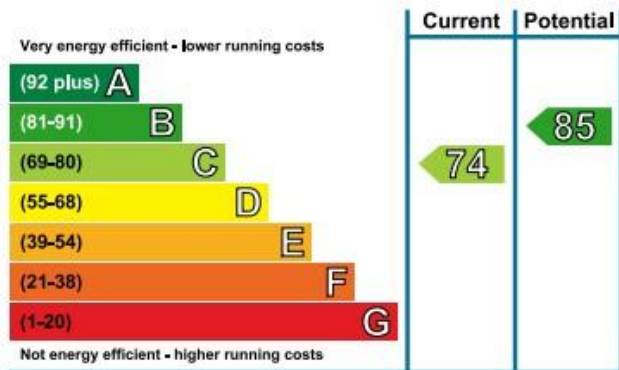
GARAGE

Up and over door

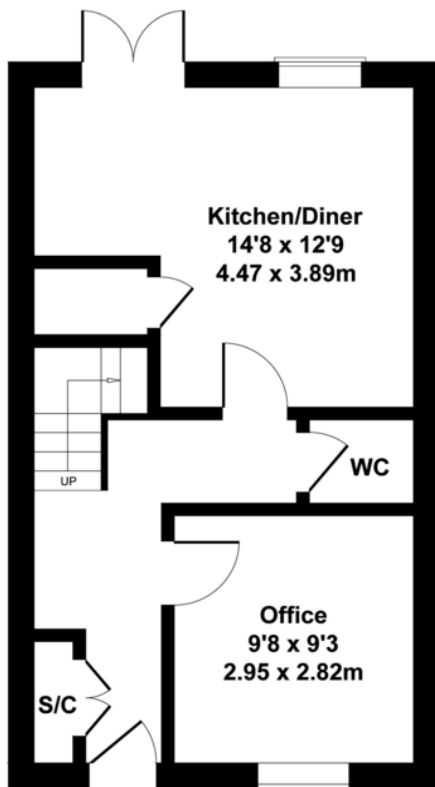
REAR GARDEN

Enclosed by timber fence with gated rear access mainly laid to lawn

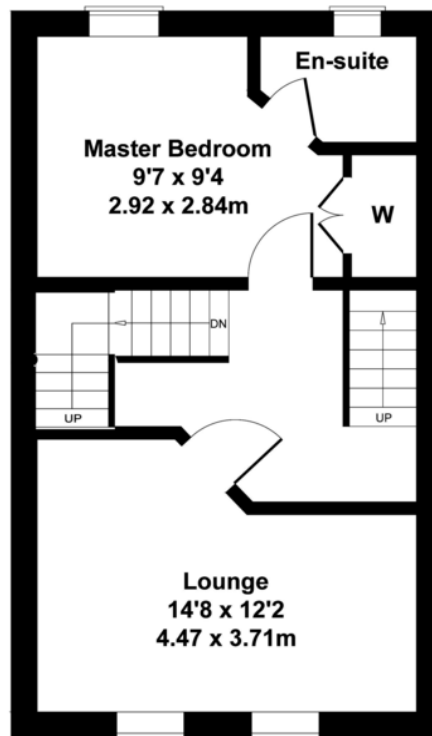




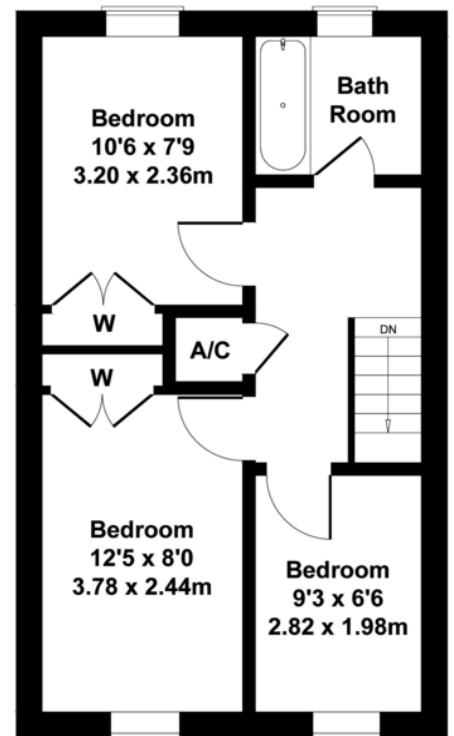
Owlswood Sandy



GROUND FLOOR



FIRST FLOOR



SECOND FLOOR

Not to Scale. Produced by The Plan Portal 2020
For Illustrative Purposes Only.

11 High Street
Sandy
Bedfordshire
SG19 1AG

www.lane-browns.co.uk
mail@lane-browns.co.uk
01767 691122

Agents Note: Whilst every care has been taken to prepare these sales particulars, they are for guidance purposes only. All measurements are approximate and are for general guidance purposes only and whilst every care has been taken to ensure their accuracy, they should not be relied upon and potential buyers are advised to recheck the measurements.