



Wynnefield Walk
Sandy, SG19 1QS

Guide Price £240,000-£250,000

Property Features

- Three-bedroom middle terrace home
- 21ft lounge
- Re-fitted modern bathroom suite
- Gas central heating
- New double glazing
- Enclosed front and rear garden
- WC
- FIRST TIME BUYER OPPORTUNITY
- Double glazing

Full Description

This well presented terrace home offers spacious living accommodation, within easy reach of Sandy's market square and all its amenities including the towns train station. The property boasts a 21ft Lounge/Diner, generous sized kitchen, WC, Upstairs offers a refitted bathroom with three bedrooms and enclosed front and rear garden. This family home is set in a popular area of Sandy and is close to schools and other amenities. Viewing is highly recommended.

ENTRANCE HALL

WC

KITCHEN

12' 1" x 9' 7" (3.68m x 2.92m)

LOUNGE/DINER

21' 6" x 10' 4" (6.55m x 3.15m)

LANDING

MASTER BEDROOM

12' 1" x 9' 9" (3.68m x 2.97m)

BEDROOM TWO

12.' 1" x 11' 6" (3.68m x 3.51m)

BEDROOM THREE

7' 4" x 10' 4" (2.24m x 3.15m)

REFITTED BATHROOM

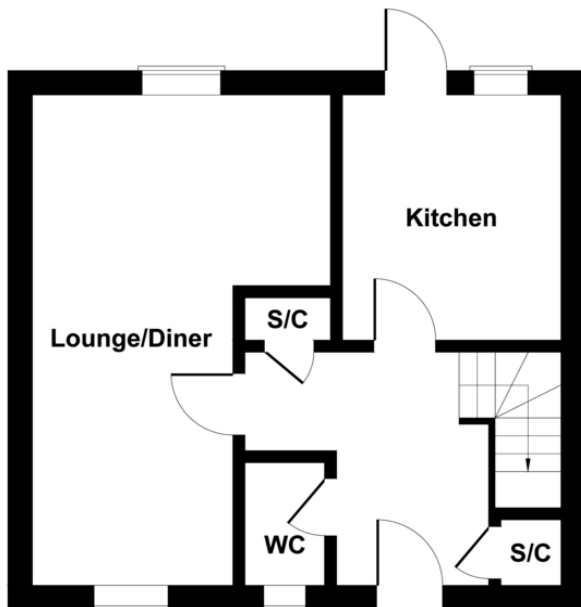
REAR GARDEN

Enclosed by timber fence, gated rear access mainly laid to lawn with patio are

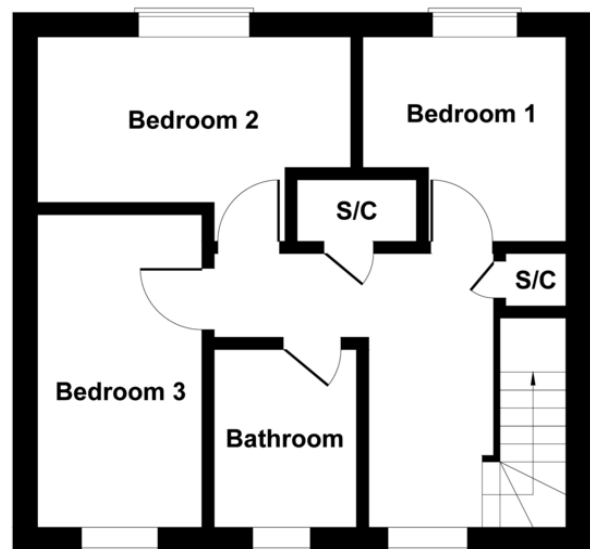




Wynnefield Walk, Sandy, SG19 1QS



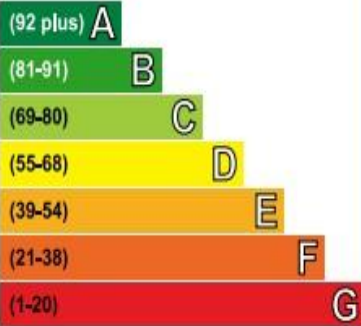
GROUND FLOOR



FIRST FLOOR

Not to Scale. Produced by The Plan Portal 2020
For Illustrative Purposes Only.

Very energy efficient - lower running costs



Not energy efficient - higher running costs

Current	Potential
	86
67	

www.lane-browns.co.uk
james@lane-browns.co.uk
01767 691122

11 High Street
Sandy
Bedfordshire
SG19 1AG

Agents Note: Whilst every care has been taken to prepare these sales particulars, they are for guidance purposes only. All measurements are approximate are for general guidance purposes only and whilst every care has been taken to ensure their accuracy, they should not be relied upon and potential buyers are advised to recheck the measurements