



The Maltings

Gamlingay, Sandy, SG19 3JN

Guide Price:

£255,000

Property Features

- SOUGHT AFTER LOCATION
- BEAUTIFULLY PRESENTED
- Two bedrooms
- Kitchen
- Lounge
- Contemporary bathroom suite
- Cloakroom
- Fully enclosed rear garden
- Allocated parking
- Gas central heating

Full Description

BEAUTIFULLY PRESENTED two bedroom mid terrace house, situated in the much SOUGHT AFTER LOCATION of The Maltings in Gamlingay. The property comprises of two bedrooms, kitchen, cloakroom, lounge, contemporary bathroom and fully enclosed rear garden with allocated parking.

HALLWAY

KITCHEN

8' 2" x 7' 3" (2.49m x 2.21m)

CLOAKROOM

LOUNGE

15' 0" x 10' 10" (4.57m x 3.3m)

STAIRS AND LANDING

BEDROOM 1

11' 6" x 10' 2" (3.51m x 3.1m)

BEDROOM 2

10' 8" x 8' 0" (3.25m x 2.44m)

BATHROOM

EXTERIOR

REAR GARDEN

Fully enclosed by timber fencing, laid to patio, high border with established plants and shrubs, tool shed and outdoor light



FRONT

borders with bushes and shrubs and outdoor light. Edit |

Delete

Allocated parking for one car

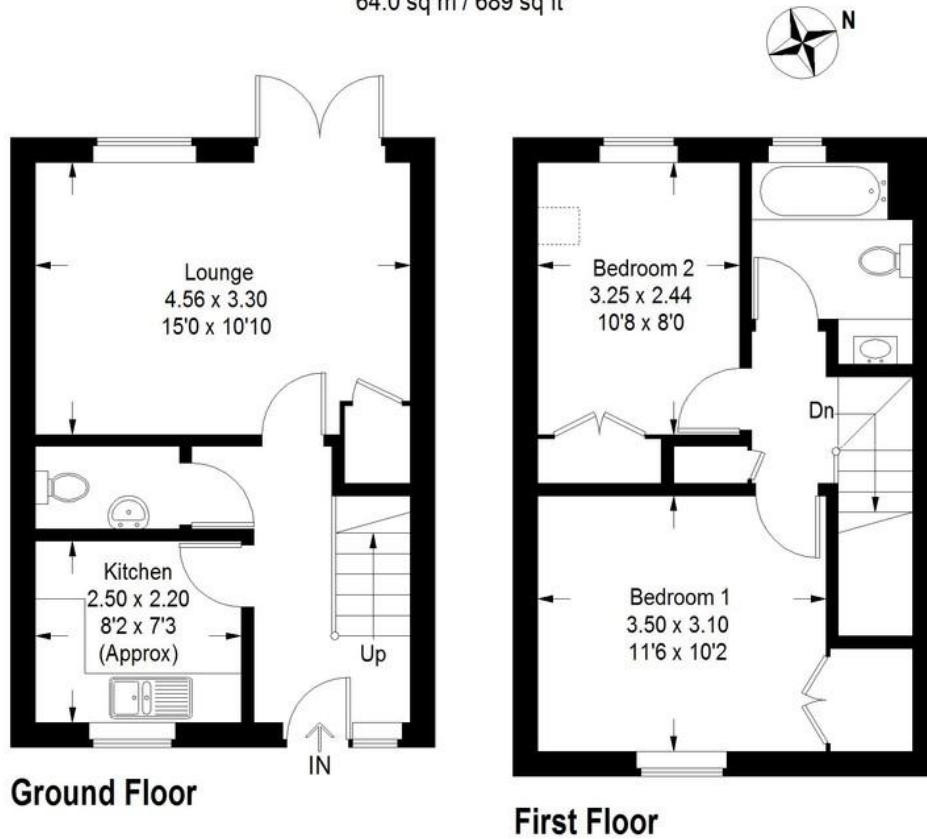


Energy Efficiency Rating

	Current	Potential
Very energy efficient - lower running costs		
(92 plus) A		90
(81-91) B		
(69-80) C	74	
(55-68) D		
(39-54) E		
(21-38) F		
(1-20) G		
Not energy efficient - higher running costs		

The Maltings Gamlingay, Sandy SG19 3JN

Approximate Gross Internal Area
64.0 sq m / 689 sq ft



This plan is for layout guidance only. Not drawn to scale unless stated. Windows and door openings are approximate. Whilst every care is taken in the preparation of this plan, please check all dimensions, shapes and compass bearings before making any decisions reliant upon them. (ID676955)
Housepix Ltd

11 High Street
Sandy
Bedfordshire
SG19 1AG

www.lane-browns.co.uk
james@lane-browns.co.uk
01767 691122

Agents Note: Whilst every care has been taken to prepare these sales particulars, they are for guidance purposes only. All measurements are approximate are for general guidance purposes only and whilst every care has been taken to ensure their accuracy, they should not be relied upon and potential buyers are advised to recheck the measurements