



The Ridgeway
Potton, Sandy, SG19 2PS

Asking Price Of
£399,995

Property Features

- DETACHED HOUSE
- Four bedrooms
- CUL-DE-SAC LOCATION
- 20ft lounge
- Diner/Family Room
- Cloakroom
- Office
- Fully enclosed rear garden
- Double length garage
- AMPLE OFF ROAD PARKING

Full Description

Lane & Browns presents this four bedroom DETACHED house situated within a CUL-DE-SAC position along the Ridgeway in the popular market town of Potton. The property provides fantastic accommodation, boasting four bedrooms, 20ft lounge, cloakroom, kitchen, diner/family room and office. The exterior comprises of a fully enclosed rear garden with summer house and garage with the front providing AMPLE OFF-ROAD PARKING for multiple vehicles. Viewing is highly recommended.

HALLWAY

Staircase to first floor, doors off to:

CLOAKROOM

LOUNGE

20' 02" x 13' 37" (6.15m x 4.9m)

KITCHEN

14' 22" x 10' 42" (4.83m x 4.11m)

DINER AND FAMILY ROOM

18' 09" x 11' 39" (5.72m x 4.34m)

OFFICE

7' 03" x 6' 72" (2.21m x 3.66m)

STAIRS AND LANDING

Doors off to:

MASTER BEDROOM

11' 74" x 11' 62" (5.23m x 4.93m)

BEDROOM 2

9' 88" x 10' 08" (4.98m x 3.25m)



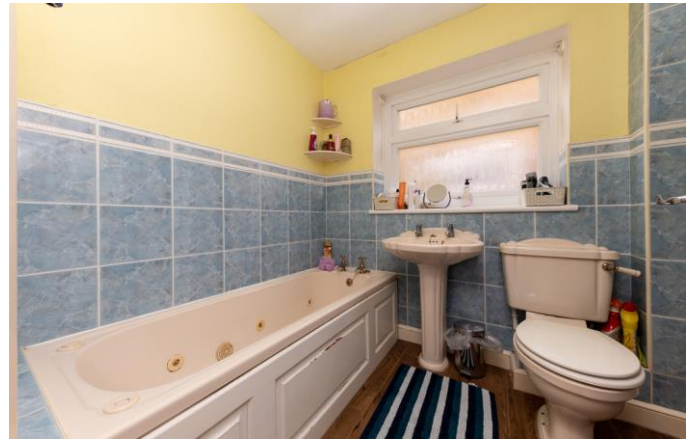
BEDROOM 3

10' 24" x 8' 70" (3.66m x 4.22m)

BEDROOM 4

9' 16" x 7' 59" (3.15m x 3.63m)

BATHROOM



EXTERIOR

REAR GARDEN

Fully enclosed by timber fencing, laid to lawn with patio slab, summer house with power and light connected, outdoor light, outdoor tap, gated side access to the front, shed with double glazed door, door access to double length garage with power and light connected.

GARAGE

Double length with up and over door, power and light connected.

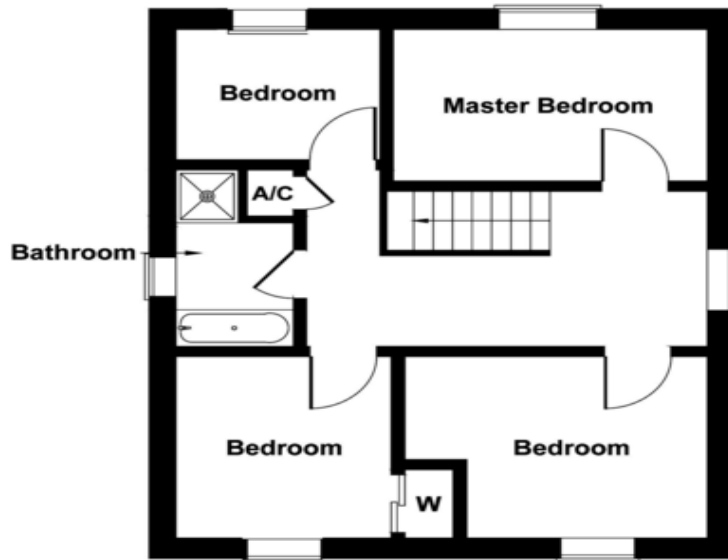


FRONT

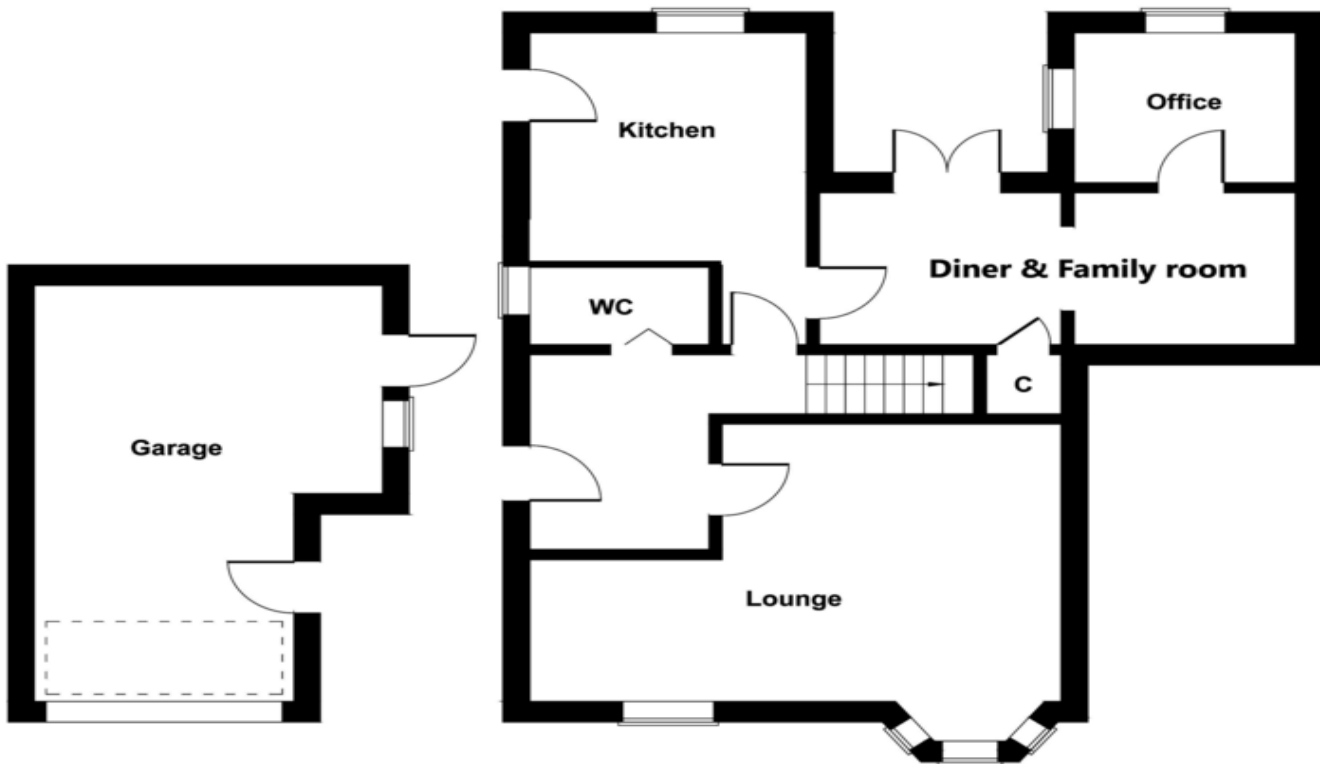
Garage and ample off road parking, borders with bushes and shrubs, outdoor light.



Ridgeway Potton



FIRST FLOOR



GROUND FLOOR

Not to Scale. Produced by The Plan Portal 2020
For Illustrative Purposes Only.

11 High Street
Sandy
Bedfordshire
SG19 1AG

www.lane-browns.co.uk
james@lane-browns.co.uk
01767 691122

Agents Note: Whilst every care has been taken to prepare these sales particulars, they are for guidance purposes only. All measurements are approximate are for general guidance purposes only and whilst every care has been taken to ensure their accuracy, they should not be relied upon and potential buyers are advised to recheck the measurements