



Engayne Avenue
Sandy, SG19 1BN

Asking Price Of:
£125,000

Property Features

- One Bedroom First Floor Flat
- NO FORWARD CHAIN
- Ideal Investment / First Time Buy
- Upvc Double Glazing
- Off Road Parking
- Communal Garden
- Easy Access to A1
- Communal Parking
- Gas Central Heating

Full Description

IDEAL INVESTMENT / FIRST TIME BUY. One bedroom first floor flat located in the market town of Sandy. Entrance hallway, bedroom, bathroom, Lounge and kitchen. Benefiting from Upvc double glazing, gas central heating, telephone entry system, off road parking and communal garden. NO FORWARD CHAIN.

ENTRANCE HALL

LOUNGE

14' 4" x 9' 5" (4.37m x 2.87m)

KITCHEN

9' 4" x 6' 3" (2.84m x 1.91m)

BEDROOM

9' 1" x 8' 5" (2.77m x 2.57m)

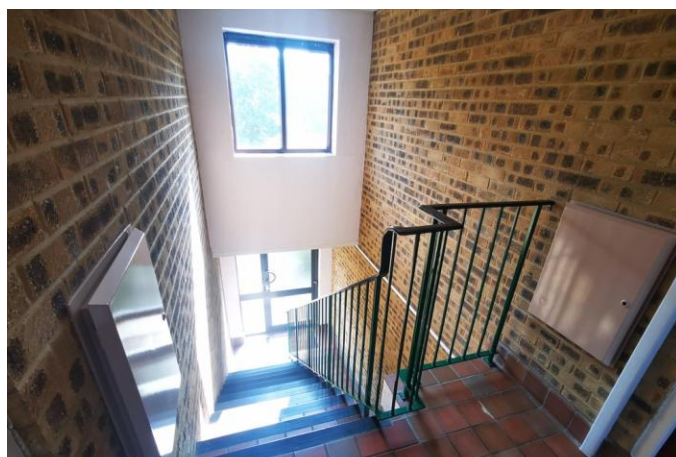
BATHROOM

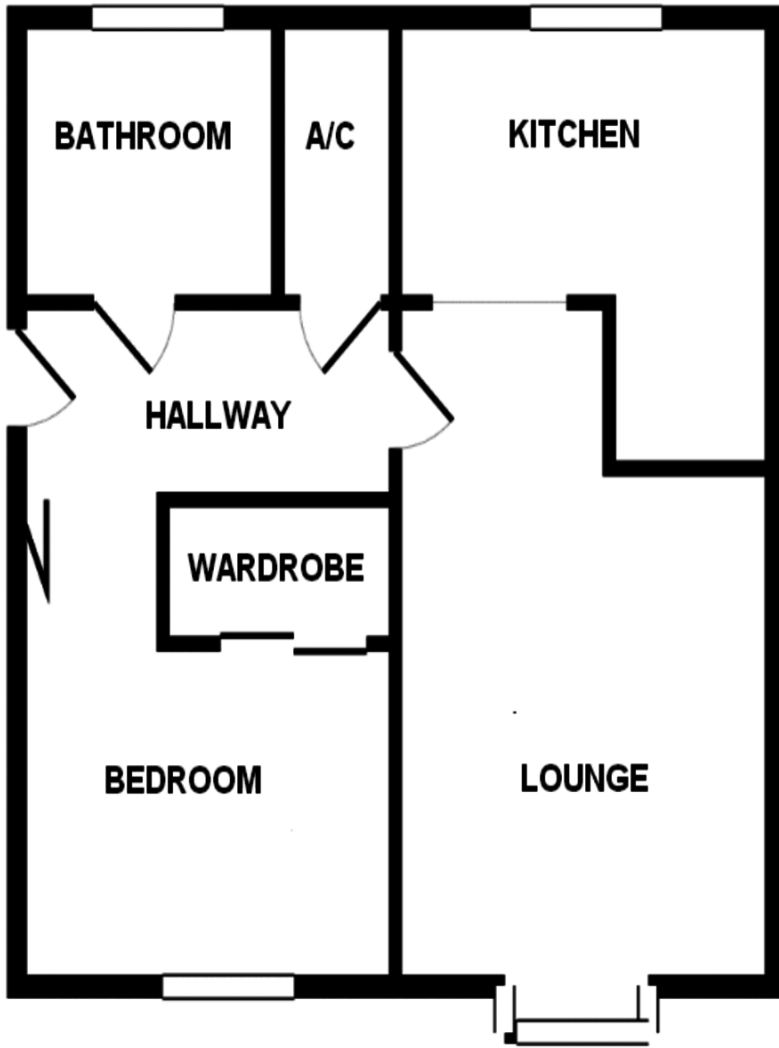
EXTERNALLY

Communal Parking to front

LEASE DETAILS

the management company has informed us that the lease is for 125 years from 1993





Energy Efficiency Rating		Current	Potential
Very energy efficient - lower running costs			
(92 plus) A			
(81-91) B			
(69-80) C		77	77
(55-68) D			
(39-54) E			
(21-38) F			
(1-20) G			
Not energy efficient - higher running costs			

11 High Street
Sandy
Bedfordshire
SG19 1AG

www.lane-browns.co.uk
james@lane-browns.co.uk
01767 691122

Agents Note: Whilst every care has been taken to prepare these sales particulars, they are for guidance purposes only. All measurements are approximate are for general guidance purposes only and whilst every care has been taken to ensure their accuracy, they should not be relied upon and potential buyers are advised to recheck the measurements